

599ft
20mb
12nm SSE of London
N5119.85 E00001.95

Alternative AD Southend Redhill

Biggin

LARS
Farnborough
East 123.225

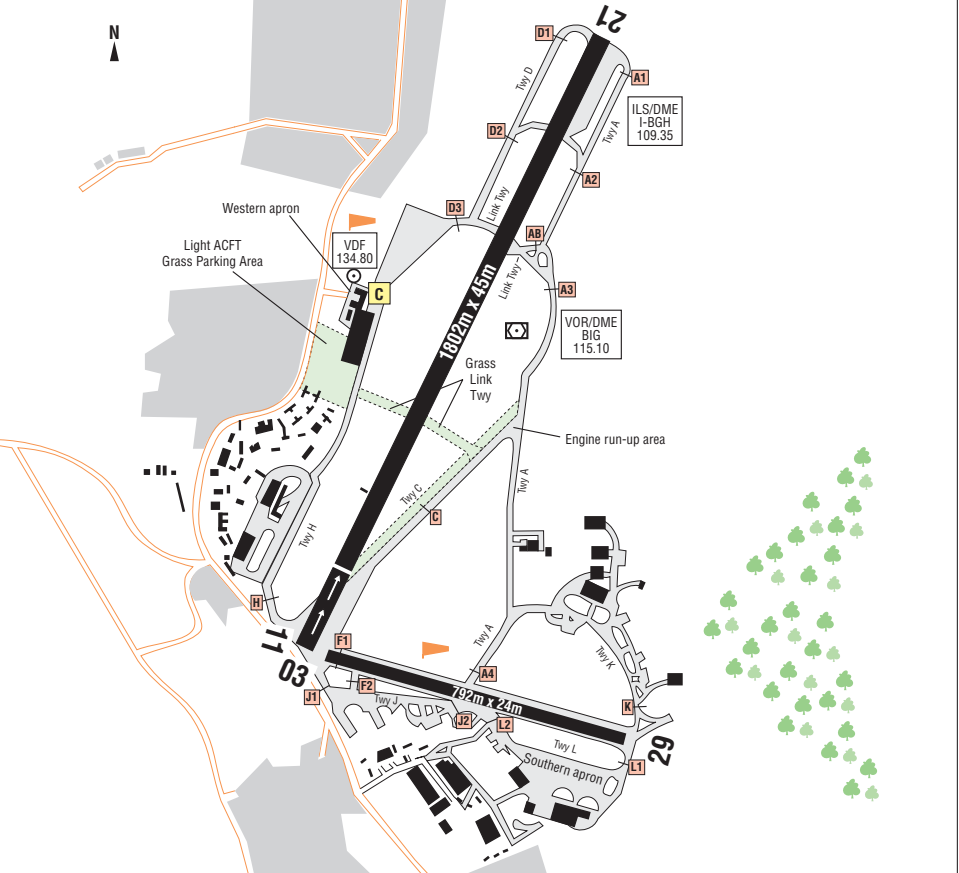
ATIS
121.875 (dept)

APP
129.400

RAD
Thames
132.700

TWR
134.800

FIRE
121.600



RWY	SURFACE	TORA	LDA	U/L	LIGHTING	RNAV	
03	Concrete	1778	1558		Thr Rwy APAPI 4° LHS	BIG	115.10 on AD
21	Concrete	1670	1670		Ap Thr Rwy PAPI 3° LHS		
11/29	Asphalt	792	792		Nil		

Remarks
PPR Helicopters. AD not available to non-radio ACFT or microlights. Hi Vis. When taking off, going around or making touch and goes remain at, or below, 500ft QFE until the upwind end of the Rwy. Joining the circuit at 1000ft QFE across the upwind end of the Rwy in use. Inbound IFR flights requiring RAD service, contact Thames RAD. AD rules and conditions of use are available from the operator.

Warnings
 Windshear and turbulence on short final Rwy03 with NE winds. Aerobatic manoeuvres and low fly pasts are prohibited unless participating in an organised flying display.
Caution: Reduced wing tip clearance between taxiing and parked ACFT on apron adjacent to TWR. Marshalling guidance provided.
Noise: All types of ACFT and helicopters must avoid noise sensitive areas surrounding AD, helicopters must conform to normal fixed wing Dept and circuit procedures unless otherwise instructed by ATC. Routes published by AD authority.

Operating Hrs Mon-Fri 0630-2000 Sat-Sun & PH 0800-1900 (Summer) +1Hr (Winter)
Circuits 03, 11 LH, 21, 29 RH 1000ft QFE
Landing Fee Up to 0.8 tonnes £17.99
 0.8-1.7 tonnes £21.15

Maintenance Shipping & Airlines Ltd Tel: 01959 573404
 Falcon Flying Services Tel: 01959 575923
Fuel AVGAS JET A1 100LL
Disabled Facilities Nil
Restaurants Restaurant/refreshments available at AD

Taxis

Luxury Cars

Tel: 01959 578550/567

Car Hire

Budget Rent-a-Car Tel: 0208 4647736

Weather Info

M T9 Fax 236 A MOEx

Operator

Regional Airports Ltd

Biggin Hill Airport

Surrey TN16 3BN

Tel: 01959 578500 (Admin)

Tel: 01959 578525 (ATC/Ops)

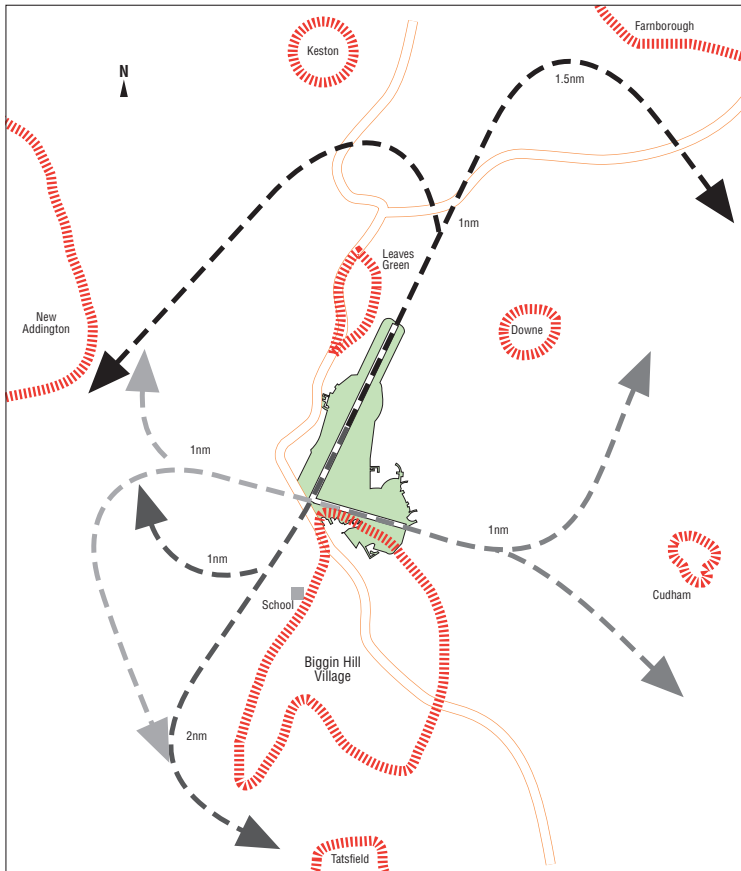
Tel: 01959 578526 (Fuel)

Fax: 01959 576406 (Admin)

Fax: 01959 576404 (Ops)

enquiries@bigginhillairport.com

www.bigginhillairport.com

Biggin Hill Noise Procedures**Visual Reference Points (VRP)**

Sevenoaks

N5116.60 E00010.90

VFR Dept Routes

Transition Alt 6000ft. Light twins and singles only

Rwy21

Dept E, S or NE avoid built up areas. Keep school and silos on left. Straight ahead for 2nm then left turn. Dept to W or N straight ahead for 1nm then turn right. Keep school on left

Rwy03

Dept to E or S, NE; straight ahead for 1.5nm then right turn.

Caution; ACFT joining dead side Rwy03/21 at Alt 1600ft. Avoid Farnborough and Downe. Dept to N and W; straight ahead for 1nm then left turn. Avoid built up areas**Rwy29**

Dept to S, E, straight ahead for 1nm then left turn. Keep silos on left.

Caution; ACFT joining dead side Rwy11/29 at Alt 1600ft. Dept to N, NE; straight ahead for 1nm right turn. Avoid Leaves Green. Dept to W; straight ahead for 1nm then turn on track.**Rwy11**

All directions; straight ahead for 1nm then left or right on track. Avoid Cudham, Downe, Biggin Hill.

Caution; If turning W or S due to ACFT joining dead side Rwy11/29 at Alt 1600ft.